



1-855-269-5623
www.anyload.com

PN-260101

SERVICE MANUAL

V1.0.0

© ANYLOAD Weigh & Measure Inc. All rights reserved.

ANYLOAD® is a registered trademark of ANYLOAD Weigh & Measure Inc.

All other brand or product names mentioned in this document are trademarks or registered trademarks of their respective owners.

All information contained in this document is, to the best of our knowledge, complete and accurate at the time of publication. ANYLOAD Weigh & Measure Inc. reserves the right to make changes to the technology, features, specifications, and design of its equipment without prior notice.

The most current version of this document, along with any software, firmware, and other product updates, can be found on our website:

www.anyload.com

Legal Notice

ANYLOAD products are subject to our **Standard Terms and Conditions of Sale, Warranty Policy**, and applicable regulatory compliance requirements as they may be updated without notice. It is the user's responsibility to ensure proper installation, operation, and maintenance of the equipment as outlined in this manual and in accordance with all relevant laws and standards.

ANYLOAD Weigh & Measure Inc. disclaims all warranties not expressly stated in the Warranty Policy, including but not limited to implied warranties of merchantability and fitness for a particular purpose. ANYLOAD shall not be liable for any direct, indirect, incidental, or consequential damages arising from the use or inability to use this equipment.

CONTENTS

- 1. Introduction 2
 - 1.1 Safety..... 2
- 2. Weight Configuration 4
- 3. Setting Gravity Constant..... 4
- 4. Wireless Pairing 5
- 5. Firmware Update..... 7
- 6. Specifications..... 10

Revision History:

Record with brief description of all revisions made to product or manual

Version	Date	Description
1.0.0	September 15, 2025	First public release version.

The most current version of this document, along with any software, firmware, and other product updates, can be found on our website:

www.anyload.com

1. Introduction

This manual provides information on installation, configuration, calibration and servicing of the PART# [Category].

For questions regarding this manual or the operation of ANYLOAD products, please contact your authorized ANYLOAD distributor or visit our website at www.anyload.com for support resources and service information.

1.1 Safety

READ this manual BEFORE operating or servicing this equipment or systems with this equipment incorporated.






FOLLOW these instructions carefully.

DO NOT allow untrained personnel to operate, clean, inspect, maintain, service, or modify this equipment.

SAVE and distribute this manual for future reference.

Failure to follow the instructions or heed the warnings could result in injury or death. Contact any ANYLOAD dealer or distributor for replacement manuals.

Indicative Markings:

Symbol	Significance
 WARNING 	Warns of a potentially dangerous situation which can result in serious physical injury or death
 CAUTION	Warns of a potentially dangerous situation which can result in slight or moderate physical injury
Notice	Failure to comply to information with this marking may lead to damage to property
 Important	Important information about the product
 Tip	Application tips and other information that may be helpful
<i>For emphasis (Italics)</i>	Italics are used to emphasize key information

General Safety:

WARNING

ONLY qualified professionals approved should carry out intrinsically safe installations. This work involves extensive knowledge of the product, specific safety standards, and the potentially hazardous environment in which it will

- Do not allow minors or inexperienced individuals to operate this unit.
- Ensure the unit is fully assembled before operation.
- Keep hands and fingers away from slots, openings, or any potential pinch points.
- Do not use this product if any component appears cracked or damaged.
- Avoid making alterations or modifications to the unit.
- Do not remove or obscure any warning labels.
- Do not submerge the unit in water.
- Before opening the unit, ensure the power cord is disconnected from the power source. Disconnect all power sources before servicing, as multiple power sources may be present. Failure to do so may result in property damage, personal injury, or death.
- For permanently connected equipment, incorporate a readily accessible disconnect device in the building's installation wiring.

- Pluggable units must be installed near an easily accessible socket/outlet.
- Use only copper or copper-clad aluminum conductors when wiring.

Recommendations for Proper Use:

- Keep the instrument away from heat sources and direct sunlight.
- Protect the instrument from rain unless it is a special IP-rated version.
- Do not clean with water jets unless specified for IP-rated models.
- Avoid dipping the instrument in water or spilling liquids on it.
- Use a soft, dry cloth for cleaning; do not use solvents or abrasive materials.
- Do not install the unit in areas with explosion hazards unless with specially rated models.
- If the working environment reaches the unit's temperature limits, ensure proper airflow around the instrument to prevent malfunctions such as sudden shutdowns or disconnections.

Disposal Guidelines:



Product Disposal: Dispose of this product at authorized waste collection centers at the end of its life cycle. Proper disposal prevents environmental and health risks and supports recycling. Illegal disposal may result in legal penalties.

Battery Disposal: Dispose of batteries at designated centers as per local laws. Batteries may contain harmful substances (e.g., Cd, Li, Hg, Pb) and must not be discarded with household waste. Improper disposal may result in legal penalties.

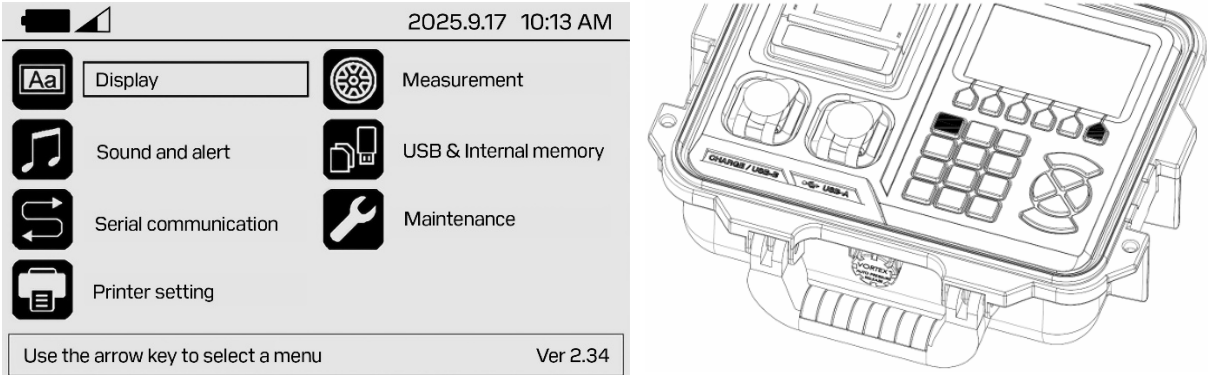
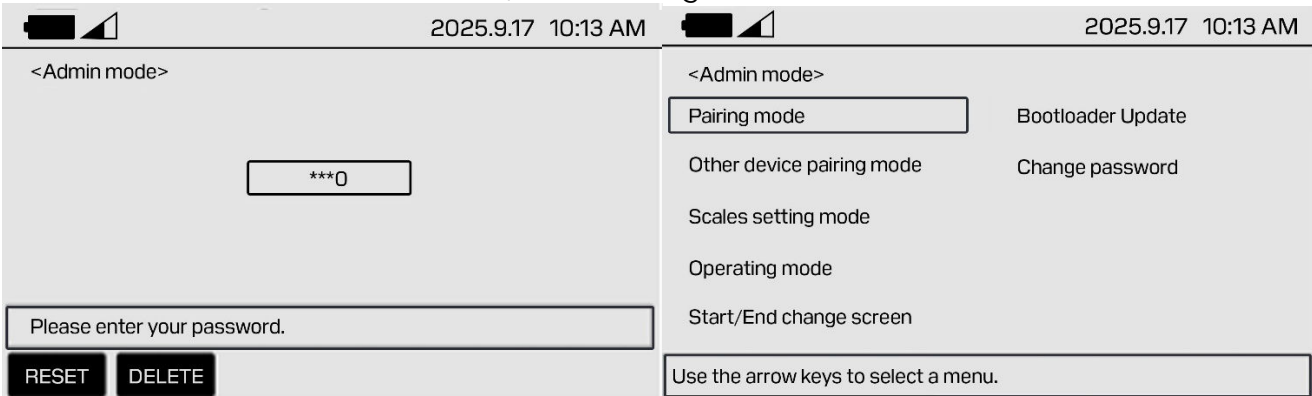
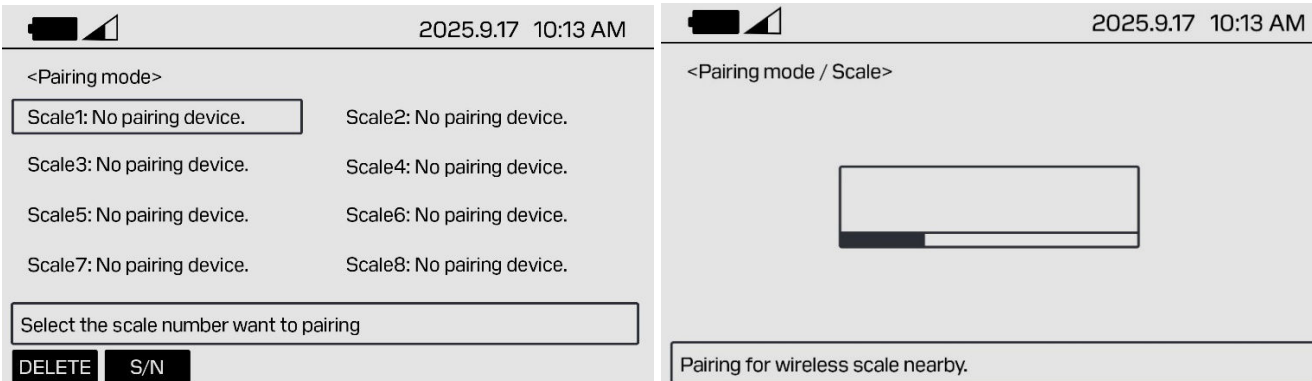
2. Weight Configuration

No.	Description	Display
1	Press [POWER] three times to turn the device on, version information will be displayed. Press [ZERO] until 000 shows up	ON--- F=100 000
2	Passcode: Press 111 and [ZERO]	111
3	Weight Calibration: Press [POWER] twice, when CAL is displayed, press [ZERO]	RFSET G-CAL CAL
4	Select number of digit by pressing [POWER], then press [ZERO]	POINT 5
5	Select the placement of decimal point, press [ZERO] to confirm	DOT 0
6	Enter Max Weight value, press [ZERO] to confirm	CAPA 2000
7	Set the division value, press [ZERO] to confirm	DIV 1
8	Make sure no load is applied, then press [ZERO]	ZERO ---
9	Span calibration: After entering the weight, press [ZERO] for two seconds. Load the device and press [ZERO] when stable. *If set to 5 division, repeat 5 times.	SET LOAD 400
10	Live Measurement: Unload the device and press [ZERO]	2000 END

3. Setting Gravity Constant

No.	Description	Display
1	Press [POWER] three times to turn the device on, version information will be displayed. Press [ZERO] until 000 shows up	ON--- F=100 000
2	Passcode: Press 111 and [ZERO]	111
3	Press [POWER] until G-CAL shows up, press [ZERO] to confirm	RFSET G-CAL
4	Enter the gravity constant at calibration site, then press [ZERO] for 2 seconds	GrAu1 9799
5	Enter the gravity constant at use site, then press [ZERO] for 2 seconds	GrAu2 9788
6	Exit	END

4. Wireless Pairing

No.	Descriptions	Display
1	Press [POWER] three times to turn the device on, version information will be displayed. Press [ZERO] until 000 shows up	ON--- F=100 000
2	Passcode: Press 111 and [ZERO]	111
3	Press [ZERO] to display a pairing code, then the device enters Pairing Mode.	RFSET 849E99
4	<p>Enter Admin Mode by pressing [MENU], then [1] and [F6] together.</p>  <p>The screenshot shows the Admin Mode menu with options: Display, Measurement, Sound and alert, USB & Internal memory, Serial communication, Maintenance, and Printer setting. A note at the bottom says 'Use the arrow key to select a menu' and 'Ver 2.34'. To the right is a photo of the ANYLOAD device.</p>	
5	<p>Enter the password. Initial password is 5700, when you forget the set password, press 57005700. After, select Pairing mode menu.</p>  <p>The first screenshot shows the password entry screen with '***0' and 'Please enter your password.' and buttons for 'RESET' and 'DELETE'. The second screenshot shows the Admin mode menu with 'Pairing mode' selected, and other options like 'Bootloader Update', 'Change password', etc. A note at the bottom says 'Use the arrow keys to select a menu.'</p>	
6	<p>Select the plate number to connect.</p>  <p>The first screenshot shows the pairing mode screen with 'Scale1: No pairing device.' through 'Scale8: No pairing device.' and a note 'Select the scale number want to pairing' with 'DELETE' and 'S/N' buttons. The second screenshot shows the pairing progress screen with 'Pairing for wireless scale nearby.' and a progress bar.</p>	

7

If successfully paired, the device's address will display. Press [ENTER] to register the device.

2025.9.17 10:13 AM	2025.9.17 10:13 AM
<Pairing mode / Scale>	<Pairing mode>
0013A200 41849E99	Scale1: 0013A200 4268552C Scale2: 0013A200 4268560D Scale3: 0013A200 426858AD Scale4: 0013A200 426854D7 Scale5: No pairing device. Scale6: No pairing device. Scale7: No pairing device. Scale8: No pairing device.
Press the [ENTER] to register the scale.	Select the scale number want to pairing
	DELETE S/N

8

Press [S/N] to register a serial number to a device. Note that this is not mandatory.

2025.9.17 10:13 AM	2025.9.17 10:13 AM
<Pairing mode>	<Pairing mode / S/N>
Scale1: 0013A200 4268552C Scale2: 0013A200 4268560D Scale3: 0013A200 426858AD Scale4: 0013A200 426854D7 Scale5: No pairing device. Scale6: No pairing device. Scale7: No pairing device. Scale8: No pairing device.	<input style="width: 150px; height: 20px;" type="text"/>
Select the scale number want to pairing	Enter the S/N of up to 17 digits.
DELETE S/N	RESET DELETE ENG.

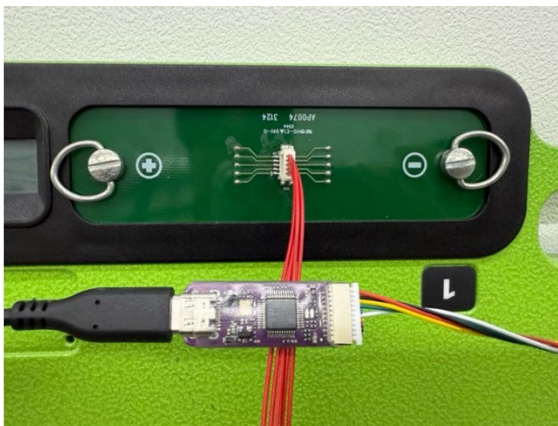
2025.9.17 10:13 AM
<Pairing mode>
Scale1: 2818193 Scale2: 0013A200 4268560D Scale3: 0013A200 426858AD Scale4: 0013A200 426854D7 Scale5: No pairing device. Scale6: No pairing device. Scale7: No pairing device. Scale8: No pairing device.
Select the scale number want to pairing
DELETE S/N

5. Firmware Update

- 1) Download STM32 Cube Programmer
- 2) Open the battery case and disconnect the battery



- 3) Connect the updating PCB to the device

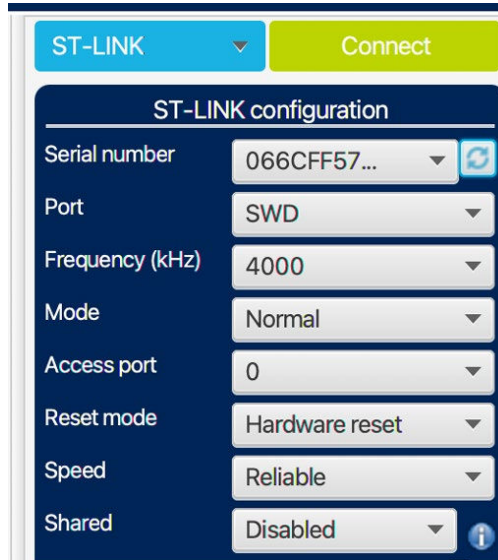


- 4) Connect the other side of the updating PCB to a PC

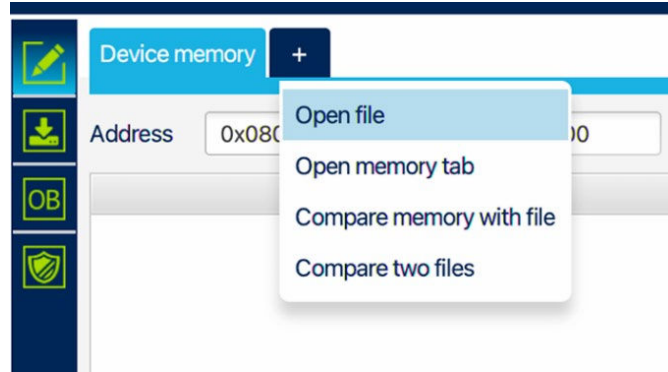


- As shown in the picture, make sure the red LED is on.

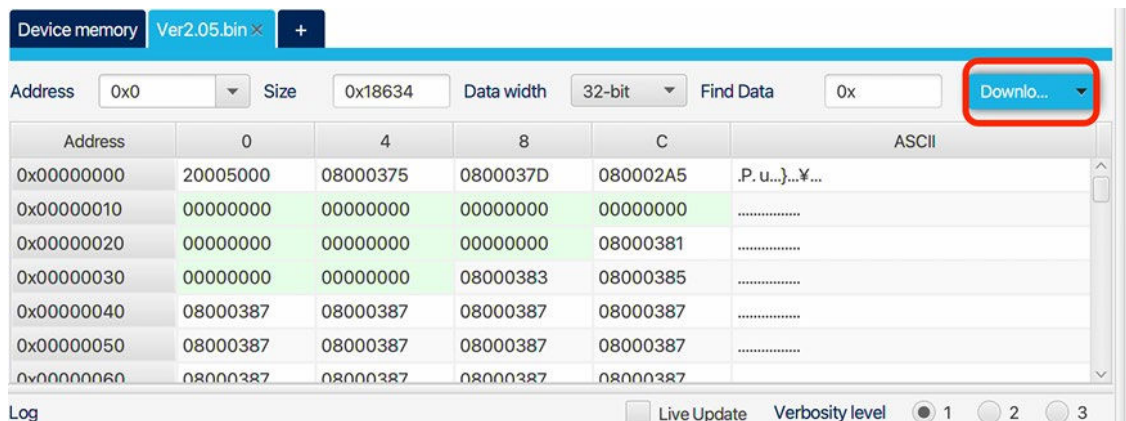
- 5) In the STM32 Cube Programmer
 - a. Select ST-LINK on the left side bar
 - b. Check the serial number. If it doesn't appear, select the icon.
 - c. Set as the image shown below. (SWD, 4000, Normal, 0, Hardware res Reliable, Disabled)
 - d. Press Connect



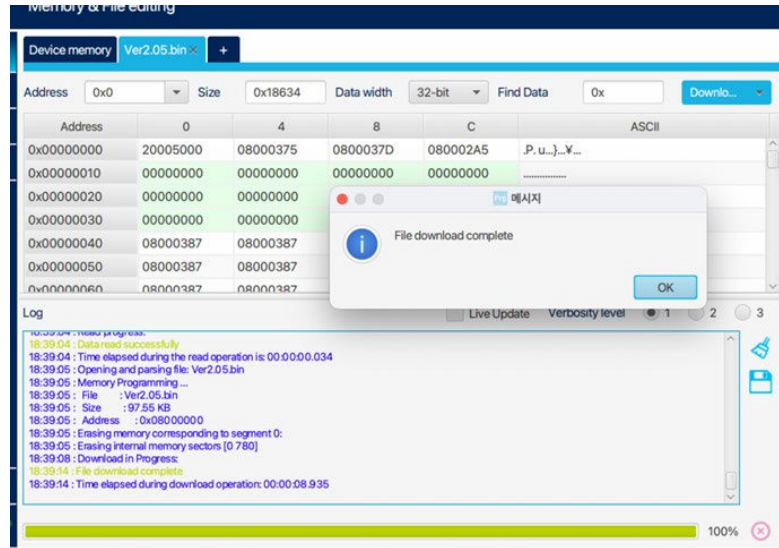
- 6) Open the firmware file (+ - Open file - select the *.bin file)



- 7) Download firmware - select the button on the top right corner



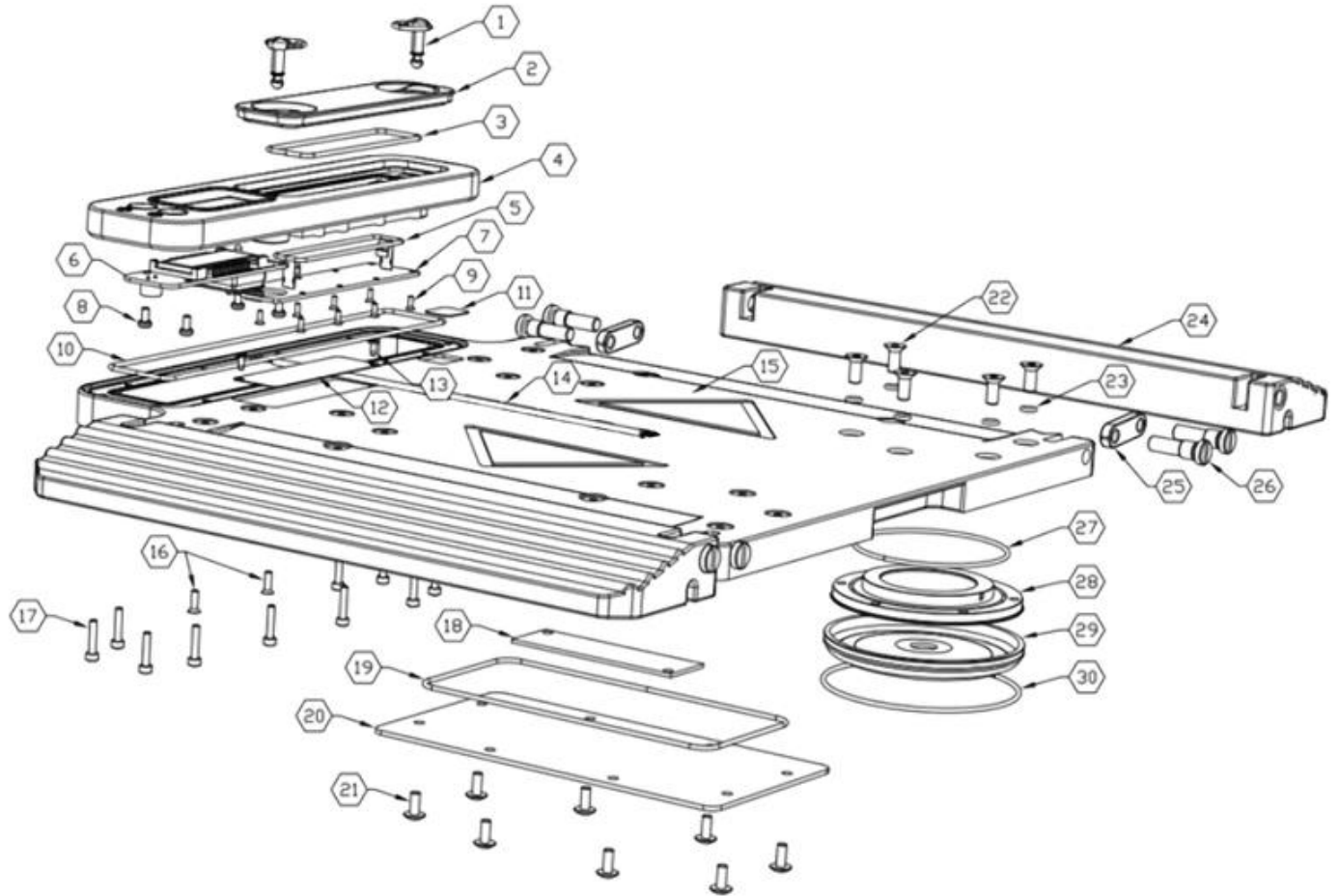
- 8) Download completed. Insert the battery again and turn the device on. Check if the firmware version that pops up when started is correct.



6. Specifications

Replacement parts for the AXA are available on a case-by-case basis. Not all parts shown below are kept as regular inventory by Anyload.

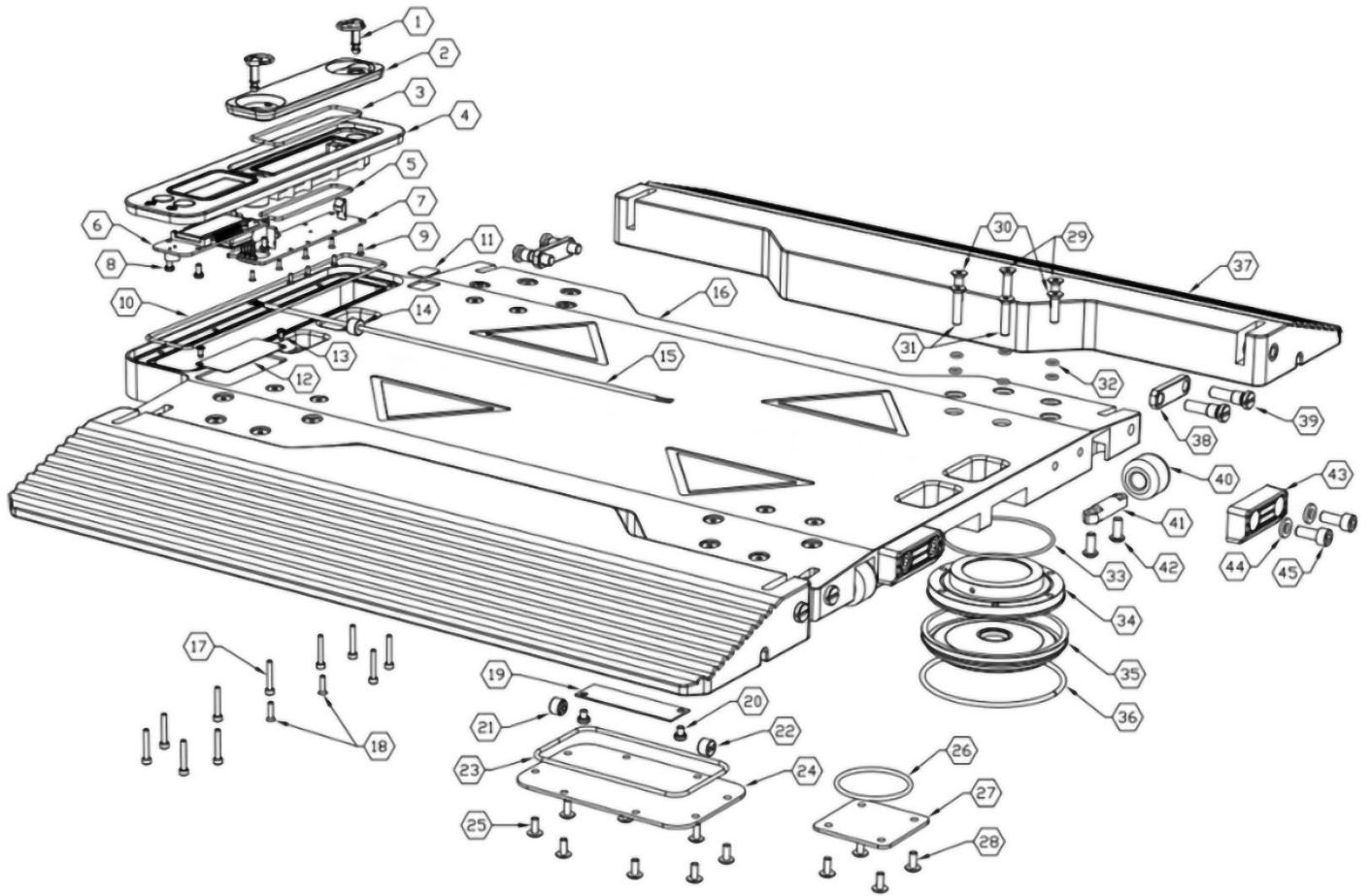
AXA-3



No	Part Name	Specifications	Q'ty	Code
1	FA ASS'Y	STUD, SPRING, RETAINER	2	A00078 A00080 A00081
2	BATTERY CASE	For AXA	1	A00251
3	SILICON O-RING	For AXA BATTERY CASE	1	A00253
4	FRONT CASE	For AXA-3	1	A00252
5	SILICON O-RING	For AXA BATTERY PCB	1	A00254
6	PCB ASS'Y	AXA MAIN PCB ASS'Y	1	A00255
7	PCB ASS'Y	AXA BATTERY PCB ASS'Y	1	A00256
8	TAPPING SCREW	PH-M3x6 TYPE B	4	A00193
9	MACHINE SCREW	FH-M2x6	8	A00171
10	SILICON O-RING	For AXA FRONT CASE	1	A00295

11	NUMBER DECAL	NUMBER 1-2 SHEET	1	A00092
12	SPEC PLATE	78x24x0.5T (LASER ENGRAVING)	1	A00257
13	RIVET	2.4x6	2	A00042
14	CABLE	For AXA-3 JB PCB (3PI/4P)	1	A00258
15	PAD	For AXA-3	1	A00269
16	MACHINE WRENCH SCREW	FH-M3x10	2	A00161
17	MACHINE WRENCH SCREW	SH-M3x15	10	A00172
18	PCB ASS'Y	AP0005A	1	A00148
19	SILICON O-RING	For JB COVER	1	A00148
20	JB COVER	181x96x2T	1	A00104
21	MACHINE SCREW	TH-M4x10	8	A00162
22	MACHINE WRENCH SCREW	FH-M5x12 (LOCKTITE)	20	A00298
23	SILICON O-RING	S05	20	A00119
24	RAMP	For AXA-3	2	A00291
25	RAMP LINK	For AXA-3	4	A00293
26	RAMP PIN	For AXA-3	8	A00108
27	SILICON O-RING	For ACPA/ACPA2	4	A00260
28	LOAD CELL	ACPA2-0.5T/1T(V2)	4	A00261 A00262
29	LOAD CELL FOOT	For ACPA2	4	A00267
30	FIX RING GUIDE	For ACPA2 2T	4	A00301

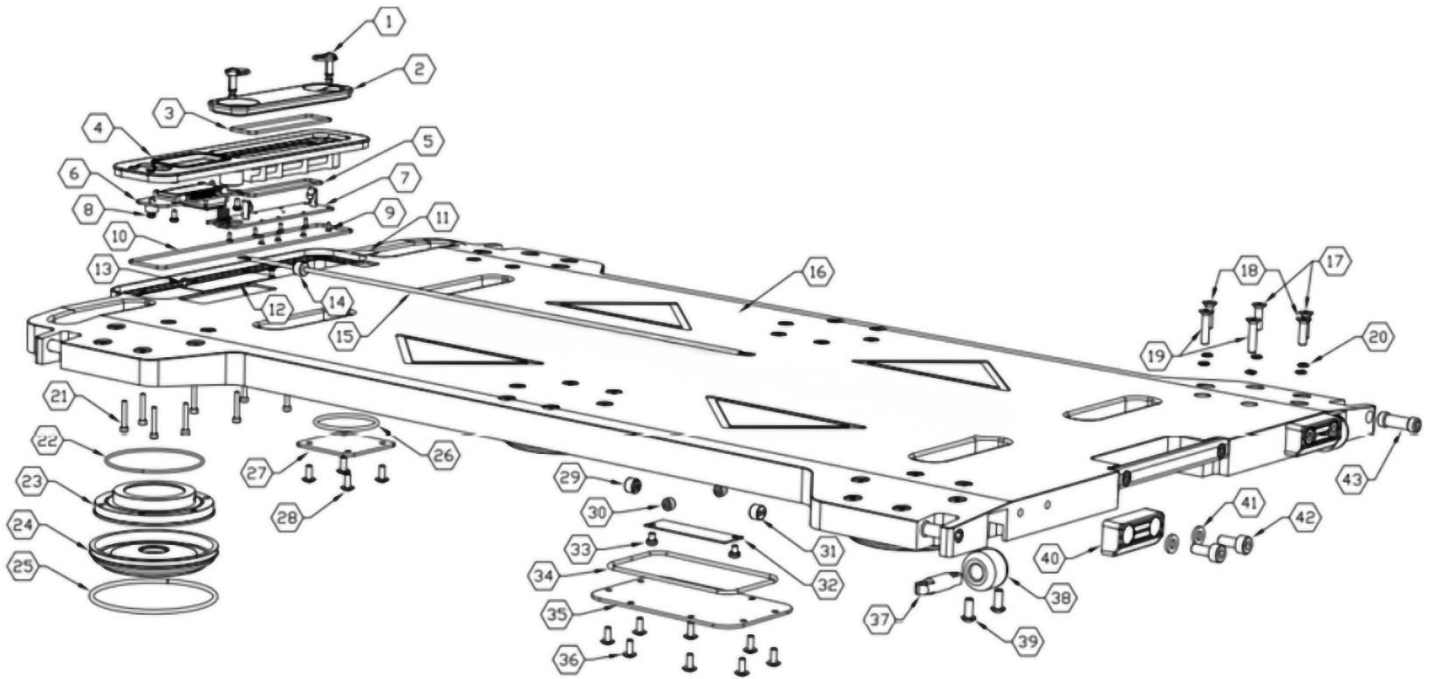
AXA-5



No	Part Name	Specifications	Q'ty	Code
1	FASTENER ASS'Y	STUD. SPRING, RETAINER	2	A00078 A00080 A00081
2	BATTERY CASE	For AXA	1	A00251
3	SILICON O-RING	For AXA BATTERY CASE	1	A00253
4	FRONT CASE	For AXA-5/8	1	A00247
5	SILICON O-RING	For AXA BATTERY PCB	1	A00254
6	PCB ASS'Y	AXA MAIN PCB ASS'Y	1	A00255
7	PCB ASS'Y	AXA BATTERY PCB ASS'Y	1	A00256
8	TAPPING SCREW	PH-M3x6 TYPE B	4	A00193
9	MACHINE SCREW	FH-M2x6	8	A00171
10	SILICON O-RING	For AXA FRONT CASE	1	A00295
11	NUMBER DECAL	NUMBER 1-2 SHEET	1	A00092
12	SPEC PLATE	78x24x0.5T (LASER ENGRAVING)	1	A00257
13	RIVET	2.4x6	2	A00042
14	PACKING RUBBER	10.1PI 1HOLE	1	A00220
15	CABLE	For AXA-5 JB PCB (3PI/4P)	1	A00259
16	PAD	For AXA-5	1	A00271

17	MACHINE WRENCH SCREW	SH-M3x20	10	A00233
18	MACHINE WRENCH SCREW	FH-M3x12	2	A00174
19	PCB ASS'Y	AP0005A	1	A00150
20	MACHINE SCREW	PH-M4x5	2	A00110
21	PACKING RUBBER	10.1PI 3HOLE	1	A00222
22	PACKING RUBBER	10.1PI 2HOLE	1	A00221
23	SILICON O-RING	For NEW JB COVER	1	A00283
24	JB COVER	132x80x2T	1	A00285
25	MACHINE SCREW	TH-M4x10	8	A00162
26	SILICON O-RING	For HOLE COVER	2	A00280
27	HOLE COVER	54x54x2T	2	A00105
28	MACHINE SCREW	TH-M4x10	8	A00162
29	MACHINE WRENCH SCREW	FH-M5x18 CUSTOM (LOCKTITE)	8	A00296
30	MACHINE WRENCH SCREW	FH-M5x20 (LOCKTITE)	8	A00118
31	MACHINE WRENCH SCREW	FH-M5x23 CUSTOM (LOCKTITE)	8	A00297
32	SILICON O-RING	S05	24	A00119
33	SILICON O-RING	For ACPA/ACPA2	4	A00260
34	LOAD CELL	ACPA-2T (V3)	4	A00263
35	LOAD CELL FOOT	For ACPA	4	A00266
36	FIX RING GUIDE	For ACPA	4	A00116
37	RAMP	For AXA-5	2	A00147
38	RAMP LINK	For AXA-5	4	A00109
39	RAMP PIN	For AXA-5	8	A00108
40	ROLLER	For AXA-5/8	2	A00106
41	ROLLER PIN	For AXA-5/8	2	A00107
42	MACHINE WRENCH SCREW	RH-M5x12	4	A00111
43	STAND RUBBER	For AXA-5/8	2	A00076
44	WASHER	M6	4	A00113
45	MACHINE WRENCH SCREW	SH-M6x15	4	A00112

AXA-8



No	Part Name	Specifications	Q'ty	Code
1	FASTENER ASS'Y	STUD, SPRING, RETAINER	2	A00078 A00080 A00081
2	BATTERY CASE	For AXA	1	A00251
3	SILICON O-RING	For AXA BATTERY CASE	1	A00253
4	FRONT CASE	For AXA-5/8	1	A00247
5	SILICON O-RING	For AXA BATTERY PCB	1	A00254
6	PCB ASS'Y	AXA MAIN PCB ASS'Y	1	A00255
7	PCB ASS'Y	AXA BATTERY PCB ASS'Y	1	A00256
8	TAPPING SCREW	PH-M3x6 TYPE B	4	A00193
9	MACHINE SCREW	FH-M2x6	8	A00171
10	SILICON O-RING	For AXA FRONT CASE	1	A00295
11	NUMBER DECAL	NUMBER 1-2 SHEET	1	A00092
12	SPEC PLATE	78x24x0.5T (LASER ENGRAVING)	1	A00257
13	RIVET	2.4x6	2	A00042
14	PACKING RUBBER	10.1PI 1HOLE	1	A00220
15	CABLE	For AXA-8 JB PCB (3PI/4P)	1	A00259
16	PAD	For AXA-8	1	A00273
17	MACHINE WRENCH SCREW	FH-M5x18 CUSTOM (LOCKTITE)	12	A00296
18	MACHINE WRENCH SCREW	FH-M5x20 (LOCKTITE)	12	A00118
19	MACHINE WRENCH SCREW	FH-M5x23 CUSTOM (LOCKTITE)	12	A00297
20	SILICON O-RING	S05	36	A00119

21	MACHINE WRENCH SCREW	SH-M3x20	12	A00233
22	SILICON O-RING	For ACPA/ACPA2	6	A00260
23	LOAD CELL	ACPA-3T (V3)	6	A00263
24	LOAD CELL FOOT	For ACPA	6	A00266
25	FIX RING GUIDE	For ACPA 3T	6	A00116
26	SILICON O-RING	For HOLE COVER	2	A00280
27	HOLE COVER	54x54x2T	2	A00105
28	MACHINE SCREW	TH-M4x10	8	A00162
29	PACKAGING RUBBER	10.PI 3HOLE	1	A00222
30	PACKAGING RUBBER	8.1PI 1HOLE	2	A00219
31	PACKAGING RUBBER	10.1PI 2HOLE	1	A00221
32	PCB ASS'Y	AP0005A	1	A00150
33	MACHINE SCREW	PH-M4x5	2	A00110
34	SILICON O-RING	For NEW JB COVER	1	A00283
35	JB COVER	132x80x2T	1	A00285
36	MACHINE SCREW	TH-M4x10	8	A00162
37	ROLLER PIN	For AXA-5/8	2	A00107
38	ROLLER	For AXA-5/8	2	A00106
39	MACHINE WRENCH SCREW	RH-M5x12	4	A00111
40	STAND RUBBER	For AXA-5/8	2	A00076
41	WASHER	M6	4	A00113
42	MACHINE WRENCH SCREW	SH-M6x15	4	A00112
43	MACHINE SET SCREW	M10x30 CUSTOM	2	A00310

Please Contact Our Authorized Dealer for Technical Assistance:

Empty rectangular box for technical assistance contact information.

Notes:

V1.0.0
PN-260101

1-855-269-5623
www.anyload.com



© 2026 Anyload Weigh & Measure Inc.
Specifications subject to change without notice.

